



Transport  
Canada

Transports  
Canada



# Canadian Motor Vehicle Traffic Collision Statistics



# 2014

Collected in cooperation with the Canadian Council  
of Motor Transport Administrators

© Her Majesty the Queen in Right of Canada, represented by the Minister of Transport, 2016.

Cette publication est aussi disponible en français sous le titre Statistiques sur les collisions de la route au Canada 2014.

Catalogue No.: T45-3E-PDF  
ISBN: 1701-6223

To request permission to reproduce materials from this publication for commercial purposes, please complete the following web form: [www.tc.gc.ca/eng/crown-copyright-request-614.html](http://www.tc.gc.ca/eng/crown-copyright-request-614.html)

Or contact: [TCcopyright-droitdauteurTC@tc.gc.ca](mailto:TCcopyright-droitdauteurTC@tc.gc.ca)

To find out more about national road safety programs or initiatives, call Transport Canada toll free at 1-800-333-0371 or e-mail us at [mvs-sa@tc.gc.ca](mailto:mvs-sa@tc.gc.ca). You can also visit our web site at [www.tc.gc.ca/motor-vehicle-safety](http://www.tc.gc.ca/motor-vehicle-safety) or the Canadian Council of Motor Transport Administrators' web site at [www.ccmta.ca](http://www.ccmta.ca).

More detailed motor vehicle collision data can be queried using the National Collision Database (NCDB) On-Line tool located at [www.tc.gc.ca/VehicleCollisions](http://www.tc.gc.ca/VehicleCollisions).

## INTRODUCTION

**Transport Canada's National Collision Database (NCDB) contains data on all reportable motor vehicle collisions in Canada that the provinces and territories provide each year.**

**The federal, provincial and territorial governments in Canada work to improve road safety to reduce the number of fatalities and serious injuries and to have the safest roads in the world.**

**The year 2014 saw a decrease in the number of fatalities, serious injuries, and total injuries; in fact, 2014 marked the lowest counts for all three of these casualty groups since these data were first collected by Transport Canada in the early 1970's.**

- **In 2014, the number of motor vehicle fatalities was 1,834; down 6.0% from 2013 (1,951).**
- **The downward trend for serious injuries continued, dropping to 9,647 in 2014; down 9.5% from 2013 (10,663).**
- **The number of fatalities per 100,000 population was 5.2 in 2014, down from 5.5 in 2013.**
- **The number of fatalities per billion vehicle kilometres travelled was 5.1 in 2014; the lowest on record.**

# 2014

## COLLISIONS AND CASUALTIES 1995-2014

YEAR	COLLISIONS		VICTIMS		
	FATAL <sup>1</sup>	PERSONAL INJURY <sup>2</sup>	FATALITIES <sup>3</sup>	SERIOUS INJURIES <sup>4</sup>	INJURIES <sup>5</sup> (TOTAL)
1995	2,818	162,014	3,313	20,188	238,458
1996	2,740	153,944	3,129	18,734	227,283
1997	2,660	147,549	3,076	17,294	217,401
1998	2,583	145,615	2,919	16,410	213,319
1999	2,632	148,683	2,980	16,187	218,457
2000	2,548	153,290	2,904	15,581	222,848
2001	2,415	149,023	2,758	15,296	216,542
2002	2,583	153,832	2,921	15,894	222,665
2003	2,487	150,493	2,777	15,110	216,123
2004	2,438	145,150	2,735	15,572	206,104
2005	2,551	145,559	2,898	15,792	204,701
2006	2,586	142,517	2,871	16,044	199,976
2007	2,455	138,615	2,753	14,410	192,745
2008	2,193	127,571	2,431	12,851	176,394
2009	2,007	123,449	2,216	11,955	170,770
2010	2,021	123,615	2,238	11,796	172,081
2011	1,849	122,350 <sup>r</sup>	2,023	10,940	167,741 <sup>r</sup>
2012	1,837 <sup>r</sup>	122,663 <sup>r</sup>	2,079 <sup>r</sup>	11,087 <sup>r</sup>	166,479 <sup>r</sup>
2013	1,731 <sup>r</sup>	120,370 <sup>r</sup>	1,951 <sup>r</sup>	10,663 <sup>r</sup>	164,493 <sup>r</sup>
2014	1,667	110,500	1,834	9,647	149,900

1. "Fatal collisions" include all reported motor vehicle crashes that resulted in at least one death, where death occurred within 30 days of the collision, except in Quebec before 2007 (eight days).
2. "Personal injury collisions" include all reported motor vehicle crashes which resulted in at least one injury but not death within 30 days of the collision, except in Quebec before 2007 (eight days).
3. "Fatalities" include all those who died as a result of a reported traffic collision within 30 days of its occurrence, except in Quebec before 2007 (eight days).
4. "Serious Injuries" include persons admitted to hospital for treatment or observation. Serious injuries were estimated from 1995 to 2014 because several jurisdictions under-reported these numbers.
5. "Total Injuries" include all reported severities of injuries ranging from minimal to serious.

r Revised.

## FATALITIES AND INJURIES BY AGE GROUP 2014

AGE GROUP (YRS)	FATALITIES	SERIOUS INJURIES	INJURIES (TOTAL)
0-4	17	87	1,984
5-14	30	293	5,957
15-19	146	897	14,015
20-24	194	1,205	17,732
25-34	301	1,725	27,605
35-44	210	1,329	23,051
45-54	265	1,431	23,210
55-64	250	1,185	17,220
65 +	400	1,208	15,047
NOT STATED	21	287	4,079
<b>TOTAL</b>	<b>1,834</b>	<b>9,647</b>	<b>149,900</b>

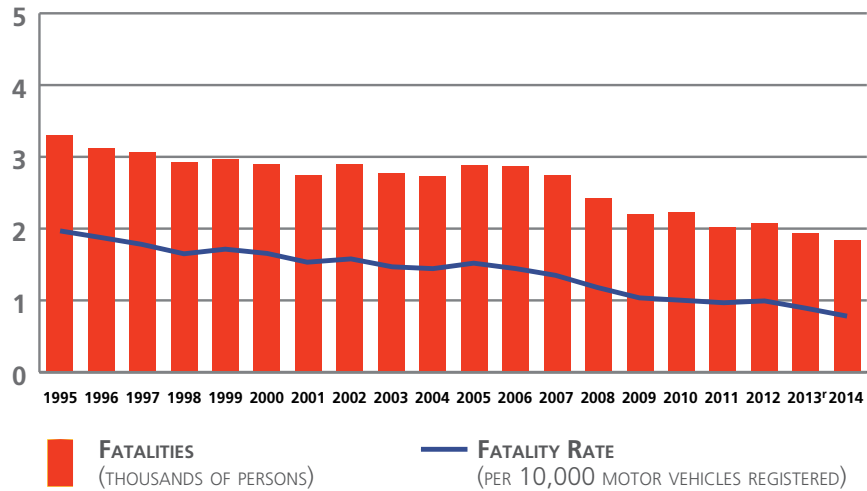
## FATALITIES BY ROAD USER CLASS 2010-2014

ROAD USER CLASS	2010	2011	2012	2013	2014
# DRIVERS	1,131	1,022	1,023 <sup>r</sup>	961 <sup>r</sup>	933
% DRIVERS	50.5	50.5	49.2 <sup>r</sup>	49.3 <sup>r</sup>	50.9
# PASSENGERS	491	401	457 <sup>r</sup>	368 <sup>r</sup>	347
% PASSENGERS	21.9	19.8	22.0 <sup>r</sup>	18.9 <sup>r</sup>	18.9
# PEDESTRIANS	306	321	326 <sup>r</sup>	307 <sup>r</sup>	288
% PEDESTRIANS	13.7	15.9	15.7 <sup>r</sup>	15.7 <sup>r</sup>	15.7
# BICYCLISTS	62	57	63 <sup>r</sup>	69 <sup>r</sup>	35
% BICYCLISTS	2.8	2.8	3.0 <sup>r</sup>	3.5 <sup>r</sup>	1.9
# MOTORCYCLISTS*	193	173	175	198	189
% MOTORCYCLISTS	8.6	8.6	8.4	10.1 <sup>r</sup>	10.3
# NOT STATED/OTHER	55	49	35 <sup>r</sup>	48 <sup>r</sup>	42
% NOT STATED/OTHER	2.5	2.4	1.7 <sup>r</sup>	2.5 <sup>r</sup>	2.3
# TOTAL	2,238	2,023	2,079 <sup>r</sup>	1,951 <sup>r</sup>	1,834
% TOTAL	100.0	100.0	100.0	100.0	100.0

\* Includes moped riders.

r Revised.

## FATALITIES 1995-2014



## CASUALTY RATES 2014

	PER 100,000 POPULATION <sup>1</sup>		PER BILLION VEHICLE-KILOMETRES <sup>2</sup>		PER 100,000 LICENSED DRIVERS	
	FATALITIES	INJURIES	FATALITIES	INJURIES	FATALITIES	INJURIES
<b>CANADA</b>	5.2	421.7	5.1	418.1	7.4	601.7
<b>NL</b>	5.5	390.5	5.8	413.7	8.0	567.1
<b>PE</b>	3.4	352.3	3.5	358.9	4.7	489.2
<b>NS</b>	5.8	412.4	5.0	356.2	7.9	555.0
<b>NB</b>	7.7	353.8	7.1	326.5	10.5	481.8
<b>QC</b>	4.1	436.0	4.6	493.3	6.2	657.4
<b>ON</b>	3.5	347.4	3.6	352.1	5.0	489.7
<b>MB</b>	5.3	895.2	4.9	820.3	7.8	1,318.5
<b>SK</b>	11.6	516.4	9.5	423.0	16.5	733.8
<b>AB</b>	9.0	454.9	6.3	317.8	12.1	613.1
<b>BC</b>	6.3	455.5	7.7	560.0	8.9	644.7
<b>YT</b>	10.8	483.8	6.3	280.6	14.2	633.9
<b>NT</b>	9.1	202.4	10.3	228.8	16.0	356.8
<b>NU</b>	11.1	130.3	108.1	1,270.3	54.6	641.0

1. Statistics Canada, *Annual Demographic Estimates: Canada, Provinces and Territories, 2015*, Catalogue No. 91-215-X.
2. Statistics Canada, *'Canadian Vehicle Survey'*, Catalogue No. 53-223-XIE.

Notes: Vehicle kilometres travelled data were not available for 2014 so they were estimated using average yearly change for the years 2011-2013

Data for Ontario are preliminary for 2014. Data for Newfoundland and New Brunswick were estimated.

Recent changes in how traffic accident reports are collected in Manitoba resulted in an increased number of injuries of a minimal nature being captured in 2014.



**PERCENTAGE OF DRIVER AND PASSENGER FATALITIES AND SERIOUS INJURIES BY AGE GROUP 2014**

AGE GROUP (YRS)	FATALITIES		SERIOUS INJURIES	
	DRIVERS	PASSENGERS	DRIVERS	PASSENGERS
0-4	0.0	2.8	0.0	3.1
5-14	0.1	4.8	0.0	7.4
15-19	7.2	13.5	7.6	14.7
20-24	10.6	13.2	11.8	14.6
25-34	18.3	13.5	20.4	15.8
35-44	12.7	8.2	15.9	10.1
45-54	15.1	11.8	16.7	9.4
55-64	14.7	8.2	13.3	7.9
65 +	21.0	22.0	12.7	11.2
NOT STATED	0.3	2.0	1.6	5.8
<b>TOTAL</b>	<b>100.0</b>	<b>100.0</b>	<b>100.0</b>	<b>100.0</b>

**NUMBER OF LICENSED DRIVERS BY GENDER AND BY AGE 2014**

AGE GROUP (YRS)	MALES	FEMALES	TOTAL
<16	29,782	25,145	54,927
16-19	601,391	553,183	1,154,574
20-24	1,015,355	940,890	1,956,245
25-34	2,173,377	2,096,856	4,270,233
35-44	2,180,884	2,123,336	4,304,219
45-54	2,456,317	2,342,910	4,799,227
55-64	2,193,457	2,068,965	4,262,421
65 +	2,182,217	1,929,988	4,112,205
NOT STATED	0	0	0
<b>TOTAL</b>	<b>12,832,778</b>	<b>12,081,272</b>	<b>24,914,051</b>

**LICENSED DRIVERS AND MOTOR VEHICLE REGISTRATIONS BY TYPE OF VEHICLE (IN THOUSANDS) 1995-2014**

	LICENSED DRIVERS <sup>1</sup>	LIGHT-DUTY VEHICLES <sup>2</sup>	COMMERCIAL VEHICLES <sup>3</sup>	MOTOR-CYCLES <sup>4</sup>
1995	19,327	13,192	3,535	320
1996	19,964	13,251	3,620	312
1997	20,148	13,515	3,684	319
1998	20,744	13,887	3,767	334
1999	20,934	16,538	722	274
2000	20,593	16,832	739	311
2001	20,879	17,055	729	318
2002	21,163	17,543	724	350
2003	21,436	17,755	740	373
2004	21,673	17,920	752	409
2005	21,937	18,124	786	443
2006	22,278	18,739	841	485
2007	22,606	19,199	872	522
2008	22,972	19,613	907	567
2009	23,198	19,877	915	595
2010	23,541	20,268	964	616
2011	23,831	20,608	1,008	631
2012	24,147	20,652	1,053	661
2013	24,630	21,262	1,072	672
2014	24,914	21,730	1,120	688

1. Excludes temporary permits prior to 1999.
2. Pre-1999, these registrations include passenger automobiles. From 1999, light-duty vehicles include passenger type vehicles (automobiles, passenger vans), light trucks and vans (less than 4 500 kg).
3. Pre-1999, these registrations include trucks, buses and other commercial vehicles, such as vans. From 1999, these registrations include commercial vehicles (trucks and buses) greater than 4 500 kg.
4. Includes mopeds.

Source: 1995 to 1998: Statistics Canada, Catalogue No. 53-219, "Road Motor Vehicles - Registrations".  
From 1999, the motor vehicle registration data are from Statistics Canada, CANSIM, Table 405-0004.  
From 1999 the licensed driver data were provided by each jurisdiction.

Notes: A reduced level of police reporting in British Columbia in years 1996 through 2004 has affected the British Columbia totals and, to a lesser extent, national totals reported in this publication.



### PERCENTAGE OF DRIVER AND PASSENGER FATALITIES AND SERIOUS INJURIES WHERE VICTIMS WERE NOT USING SEAT BELTS 2010-2014

	2010	2011	2012	2013	2014
<b>DRIVERS</b>					
FATALITIES	34.0	31.4	31.8	32.0	26.2
SERIOUS INJURIES	12.9	12.9	12.6	11.7	11.8
<b>PASSENGERS</b>					
FATALITIES	40.4	34.1	36.6	30.7	33.2
SERIOUS INJURIES	20.5	20.9	20.0	18.5	17.7

Note: "Serious Injuries" include victims admitted to hospital for treatment or observation.

### PERCENTAGE OF FATALITIES AND SERIOUS INJURIES BY ROAD USER CLASS 2014

ROAD USER CLASS	FATALITIES	SERIOUS INJURIES
DRIVERS	50.9	46.2
PASSENGERS	18.9	20.8
PEDESTRIANS	15.7	14.3
BICYCLISTS	1.9	4.3
MOTORCYCLISTS*	10.3	11.5
NOT STATED/OTHER	2.3	2.9
<b>TOTAL</b>	<b>100.0</b>	<b>100.0</b>

\* Includes moped riders.

### NUMBER OF COLLISIONS BY LOCATION 2014

LOCATION	FATAL	PERSONAL INJURY
URBAN <sup>1</sup>	656	81,399
RURAL <sup>2</sup>	978	26,829
NOT STATED	33	2,272
<b>TOTAL</b>	<b>1,667</b>	<b>110,500</b>

1. Urban includes: (a) metropolitan roads and streets and other urban areas, or (b) a speed limit at the collision site of 60 km/h or less.
2. Rural includes: (a) primary or secondary highways, as well as local roads, or (b) a speed limit at the collision site exceeding 60 km/h.

Note: In Alberta, New Brunswick, Manitoba, and Saskatchewan, "urban" includes any area within the corporate boundaries of a city, town, village or hamlet. "Rural" includes any area outside of what is defined as "Urban".